



Parish Profile

Airdrie: The New Wellwynd
in deferred union with
Airdrie: St. Columba's

Contents

Foreword

1. Introduction
2. Community Profile
 - 2.1 Parishes of New Wellwynd & St. Columba's
3. Going Forward In Faith
 - 3.1 The Candidate
 - 3.2 The Future
4. Worship & Christian Education
5. Pastoral Care & Mission
6. World Church & Ecumenical
7. Finance and Stewardship
8. Our Challenges & Opportunities
9. Environmental
10. Buildings
11. Staffing
12. Web links

Foreword

“We are seeking a minister who is ready to walk alongside us as we explore what faithful ministry looks like in today’s world — someone who can honour where we have come from, nurture where we are now, and help us discern where God may be leading next.”

Every new chapter begins with a turning of the page — and this one begins with an invitation.

In Airdrie, two congregations with long memories, open hearts, and a shared sense of calling are looking ahead with hope and imagination. The New Wellwynd and St. Columba's each bring their own character, history, and gifts, but together we are discovering something even richer: a growing sense that God is calling us not simply to continue, but to become.

We are seeking a minister who is ready to walk alongside us as we explore what faithful ministry looks like in today’s world — someone who can honour where we have come from, nurture where we are now, and help us discern where God may be leading next.

This is a role for a leader, a listener, a collaborator, and a companion on the journey — with room for laughter, curiosity, and the occasional leap of faith along the way.

If you are drawn to communities that value welcome, worship, service, and honest conversation; if you are excited by the challenge and promise of uniting two congregations into one shared future and purpose; and if you believe that the Church's best days are not behind it, then we invite you to read on.

This profile offers a glimpse of who we are, what we value, and what we are praying for in our next minister. Perhaps, as you read, you may sense that this next chapter could be one we write together.

1. Introduction

Being part of the Presbytery of Forth Valley and Clydesdale, two congregations of Airdrie, Airdrie New Wellwynd Parish Church and St Columba's Church Airdrie, are in a deferred union. While the New Wellwynd Parish Church is vacant, following the demission of the previous minister, St Columba's Church has a full-time Minister of Word and Sacrament with unrestricted tenure.

The charge of Airdrie: The New Wellwynd Parish Church was formed on the 17th of September 1995 from the successful union of two long-established congregations—Airdrie West, founded in 1834, and Airdrie Wellwynd, established in 1789. Similarly, the charge of Airdrie: St. Columba's has been in existence for more than 50 years, initially as a Church Extension charge.

“The New Wellwynd Parish Church and Airdrie: St. Columba's are in a deferred union. The New Wellwynd Parish Church is currently vacant following the demission of the previous minister.”

2. Community Profile



Airdrie is a town located in North Lanarkshire, in the central Lowlands of Scotland, about 12 miles east of Glasgow. Historically part of Lanarkshire, it has deep industrial roots and a strong working-class heritage, with its development closely tied to Scotland's coal mining and heavy industry during the 19th and early 20th centuries.

Key Facts About Airdrie

- **Population:** Around 37,000 people.
- **Local Economy:** Traditionally based on coal mining, weaving, and heavy industry. Today, it has diversified, with a mix of retail, public sector employment, and commuting to Glasgow.
- **Transport:** Airdrie is well connected by road and rail. The Airdrie–Bathgate rail link provides a direct connection to Edinburgh, and Airdrie railway station offers services to Glasgow Queen Street and beyond.
- **Landmarks and Attractions:**
 - **Airdrie Observatory:** One of only a few public observatories in Scotland.

- **Airdrie Public Library:** A Carnegie library with a notable architectural design.
- **Drumpellier Country Park (nearby):** Offers nature trails and lochside walks.
- **Sports:** Home to Airdrieonians FC, a football club with a rich history, playing at the Albert Bartlett Stadium. There are also several Golf courses, Tennis Club, Bowling Greens and Leisure centres and the John Smith Pool in the town centre.
- **Education:** Served by several primary and secondary schools, as well as nearby further education colleges.

Community and Culture

Airdrie has a strong sense of community and local identity. Like many towns in post-industrial Scotland, it has faced economic challenges but also revitalisation efforts. There's a blend of historic tenements, new housing developments, and green spaces.

Regeneration and Innovation

Airdrie is embracing change with heritage-led town centre projects, including library restoration and the transformation of empty buildings into modern homes and shops. Looking ahead, the planned digital, net-zero University Hospital Monklands and North Lanarkshire's AI Growth Zone promise cutting-edge healthcare, new jobs, and digital skills opportunities. These initiatives combine tradition and innovation, creating a sustainable, vibrant future for the whole community.

Getting Around

Airdrie enjoys excellent transport links, especially for a commuter town. With regular rail services to both Glasgow and Edinburgh, comprehensive bus connections, and quick motorway access, it is ideal for those needing to travel within central Scotland. Cycling infrastructure and proximity to two major airports also enhance its connectivity.

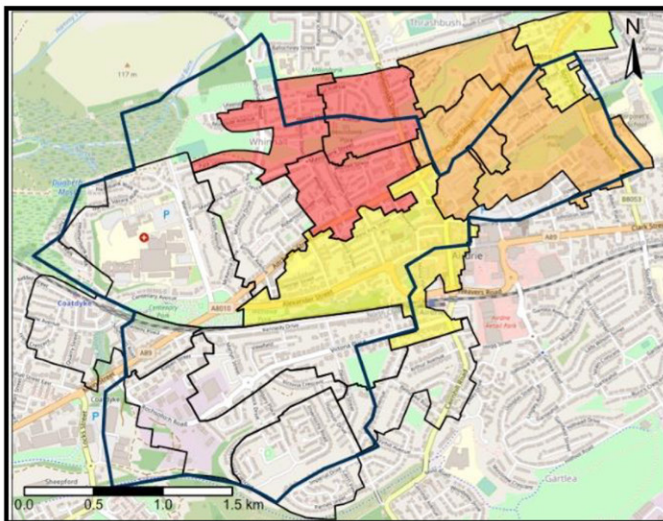
2.1 The Parishes of New Wellwynd & St. Columba's

The parish of New Wellwynd covers a large area to the North west and Central areas of the town covering Whinhall, Rochsolloch, Mavisbank, Town Centre up to Central Park where it borders with St. Columba's Parish.

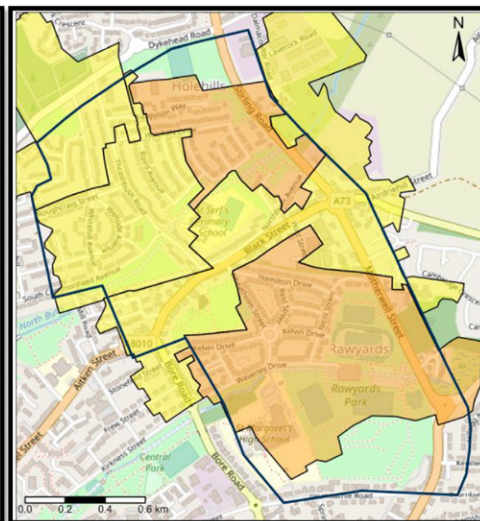
The parish of St. Columba's covers an area in the North of the town covering part of Thrashbush, Holehills and Rawyards.

Socio-Economic information on the area is available on request.

Airdrie: New Wellwynd



Airdrie: St Columba's



SIMD 2020
5% most deprived
10% most deprived
20% most deprived
Other areas (Data Zones)

Church of Scotland
Parish Boundary

3. Going Forward In Faith

3.1 The Candidate

We are seeking a forward-thinking, energetic, and inspiring minister with a pastoral heart, strong vision, and the ability to lead and inspire. This individual will work alongside us to develop a new mission strategy, strengthen everyday faith, and help expand God's Kingdom within the Airdrie community.

We acknowledge the challenges of attracting young families due to competing activities and therefore value innovation in worship, outreach, and pastoral care.

The ideal candidate will also support and equip our elders and committees through training and encouragement, leading us enthusiastically through this exciting time of change and opportunity.

The Kirk Sessions have voted to depart from the Church's traditional practice in relation to human sexuality in respect of the current vacancy. We welcome applications from anyone eligible to apply.

3.2 The Future

As part of our Mission Plan, we are entering a Parish Grouping with the congregation of Airdrie Jackson, following the formation of our new congregation.

“This individual will work alongside us to develop a new mission strategy, strengthen everyday faith, and help expand God's Kingdom within the Airdrie community.”

4. Worship & Christian Education

The worship life of both New Wellwynd and St. Columba's congregations is rooted in regularity, inclusiveness, and a deep connection to the church calendar, while reflecting distinct styles and emphases.

At New Wellwynd, worship follows a traditional style, with Sunday services at 11:00 a.m. and a midweek service on Wednesdays at 12 Noon. Services are led by the minister with members of the congregation invited to take part at various times. These services are live streamed via our website and Facebook. If you miss worship – you can use the “Watch Again” menu option from the website. Worship is supported by a regular organist and enthusiastic choir, with music drawn from Church Hymnary 4, Mission Praise, Junior Praise, and multimedia sources, accompanied by the organ, Clavinova, or piano. A dementia-friendly printed order of service and regular use of data projection enhance participation. Special services mark key points in the Christian calendar—Lent, Holy Week and Easter, Advent, Christmas, Harvest Thanksgiving, and Remembrance—and include events like Organisation Dedication and Admission of New Members which we recently celebrated. Although children do not receive Holy Communion, they are included in the broader worship life, especially during All Age Worship at events such as Thinking Day and Sunday Club Prizegiving. Joint services with neighbouring congregations occur during Holy Week and summer.

At St. Columba's, worship is contemporary in style, centred around a Sunday service at 11:30 a.m. led by the minister. The service also encourages seasonal congregational involvement. While formal all age worship is not regularly practised, the congregation values inclusive attendance from all age groups. Music is led using Church Hymnary 4, Mission Praise, and other sources, with accompaniment on digital piano. A printed, dementia-friendly order of service is provided, though data projection is not used. Special services mark key points in the Christian calendar—Lent, Holy Week and Easter, Advent, Christmas, Harvest Thanksgiving, and Remembrance—as well as ecological themes, including Earth Hour, Big Green Plastic Week, and the Season of Creation. St. Columba's also engages in joint services with neighbouring churches during key seasons.

Christian Education at New Wellwynd and St. Columba's

Both New Wellwynd Parish Church and St. Columba's are committed to supporting Christian education for all ages, offering a variety of opportunities to explore and grow in faith within a welcoming church community.

“At New Wellwynd, Christian education is vibrant and varied, with dedicated programs for children, young people, and adults.”

New Wellwynd Parish Church

At New Wellwynd, Christian education is vibrant and varied, with dedicated programs for children, young people, and adults.

Children and Youth are engaged through:

- Sunday Club, which runs during Sunday services for primary-aged children, offering Bible-based learning through fun and interactive activities.
- Bible Class, held weekly for ages 13–18, includes Bible studies, team-building, games, and organising church events.
- A wide range of uniformed organisations, including:
 - Boys' Brigade (ages 5–18) with activities such as crafts, badge work, and parades.
 - Guiding groups like Rainbows, Brownies, and Guides, fostering development through weekly meetings.
 - Scouts, providing outdoor adventures and skills-based learning.

Special youth events include:

- A Holiday Club during school breaks.
- Kid's Connection, a monthly programme for children and families.
- Seasonal celebrations like the Easter Brunch and Santa Brunch, bringing the community together in faith and fun.

For adults, New Wellwynd offers:

- Bible study sessions, arranged as needed throughout the year, focusing on scripture and its relevance to daily life.
- Enquirers' Classes for those exploring Christianity or preparing for church membership.

“Christian education at St. Columba's is simple, family-friendly, and adaptable to the needs of the congregation.”

St. Columba's

Christian education at St. Columba's is simple, family-friendly, and adaptable to the needs of the congregation.

For children and families:

- Sunday School is offered when children are present at worship.
- The Girls' Brigade provides structured faith-based activities and fellowship for girls.
- The Parents & Toddlers Group offers a welcoming space for young children to play while parents connect and build community.
- There is ongoing support by the congregation throughout the year of the various Social Projects undertaken by the Support staff at Airdrie Academy related to Mother's Day, Father's Day, Christmas, provision of toiletries

as well as the provision of stationery and other equipment at the start of and throughout the academic year. There is also involvement from the congregation related to specific poverty initiatives.

Adult education at St. Columba's includes:

- Ad-hoc Bible studies, held throughout the year based on interest and need, creating a space for thoughtful discussion and learning.
- Enquirers' Classes for those exploring Christianity or preparing for church membership.

While there are currently no additional youth programs at St. Columba's, the church remains open to developing new initiatives based on community interest.



5. Pastoral Care & Mission

Pastoral Care and Mission at New Wellwynd and St. Columba's

Both New Wellwynd Parish Church and St. Columba's Church are deeply committed to providing meaningful pastoral care and engaging in local mission, ensuring that the needs of their congregations are met with compassion and dedication.

New Wellwynd Parish Church

At New Wellwynd, pastoral care is managed under the guidance of the minister and supported by elders who make quarterly visits to members within their districts. These visits ensure regular contact, allowing elders to offer support, monitor wellbeing, and address any spiritual or practical needs. Pastoral concerns are shared by members or their families, keeping the minister informed and allowing for a timely response.

The congregation cares for the manse family by respecting their privacy, maintaining the manse to a high standard, and offering both physical and spiritual support to ensure the minister and their family feel well-supported.

While there is no formal ministry to residential homes, New Wellwynd maintains ties with local care homes, with a designated elder overseeing the district. One particular care home brings residents to mid-week services or provides access to online worship when transport is not available, showing the church's commitment to inclusivity.

At The New Wellwynd, we are committed to delivering our mission by nurturing a vibrant, caring, and worshipping community of faith that places God at the centre of everything we do. This begins with cultivating a space where worship is heartfelt and meaningful—drawing people closer to God through prayer, praise, and reflection. Our gatherings will be welcoming, spiritually enriching, and open to all, allowing each person to experience God's love and presence in their lives.

We will work intentionally to build strong, supportive relationships within our fellowship. As a caring community, we will look out for one another, ensuring that no one feels left out or alone. This involves practical help, active listening, and spiritual support that reflects Christ's compassion in action.

Inclusivity is at the heart of our mission. We will involve all members—valuing each person's unique gifts and encouraging everyone to participate in the life and work of the church. Whether through service, leadership, worship, or hospitality, every contribution will be welcomed and affirmed.

A key part of our identity is our commitment to significant outreach. We recognise that our faith must extend beyond our walls, so we will actively engage with the wider community through service, partnership, and presence. We will listen to the needs around us and respond with love, humility, and practical help, reflecting the gospel in word and deed.

By relating well to God through worship and discipleship, and relating well to others through inclusive, outward-focused action, The New Wellwynd will continue to grow as a dynamic and faithful expression of God's kingdom—alive with hope, rooted in love, and shaped by grace. Together, we journey as one body, united in purpose and mission.

St. Columba's Church

At St. Columba's, pastoral care is similarly supervised by the minister, with support from the congregation. Pastoral issues are communicated to the minister through members or their families, ensuring that the minister stays informed about the needs of the congregation.

The manse family is cared for by the congregation through a commitment to maintaining privacy, keeping the manse in good condition, and providing both physical and spiritual support.

St. Columba's also has a connection with St. Andrew's Hospice, where the minister has been involved, demonstrating the church's engagement with local mission and outreach efforts. While no other specific involvement in residential homes is mentioned, the church remains open to caring for members in any setting.

Conclusion

Both churches actively engage in pastoral care and mission, offering support to their members and reaching out to the wider community. From regular elder visits and mission partnerships to practical support for the minister's family, New Wellwynd and St. Columba's demonstrate a strong commitment to caring for their congregations and serving their local and global communities.

School Chaplaincy

Over many years both Congregations' Ministers have been involved in school chaplaincy within the local primary and secondary schools – namely Rochsolloch Primary, Chapelside Primary and Airdrie Academy Secondary. This involves taking regular assemblies at various times throughout the academic year to coincide with major Christian Festivals. Additionally, also providing ongoing pastoral support to staff as well as pupils.

The chaplains are also involved in other extra-curricular activities within the academic year – i.e. School Prizegiving / Award Ceremonies, trips to Belgium when senior pupils visit the First World War Graves.

The Chaplains also provide catering three times per year during in service days maintaining the link to staff members.

6. World Church & Ecumenical

Both New Wellwynd and St. Columba's congregations have historically engaged in ecumenical activity, though such involvement has lessened in recent years. There was previously an active Church of Scotland Fraternal and a broader Ministers' Fraternal that brought together clergy from several denominations. These gatherings created valuable opportunities for dialogue, relationship-building, and collaboration. Although they are not currently active, they reflect a strong history of ecumenical engagement among local churches. Similarly, the Council of Churches once helped facilitate joint initiatives, leaving a positive legacy of cooperation that provides a helpful foundation and encouragement for renewed collaboration in the future.

The surrounding area includes a wide range of denominations, reflecting the religious diversity of the local community. These include Baptist, Congregational, Church of the Latter-day Saints, Evangelical Brethren, Jehovah's Witnesses, Muslim, Reformed Presbyterian, Roman Catholic, Salvation Army, and the Scottish Episcopal Church.

In the past, joint services and ecumenical events were organised through the Council of Churches. These included services for Palm Sunday, Good Friday Walk for Witness, Pentecost, the Service on the Steps, and an Advent Community Carol Service.

These occasions brought churches together in worship and witness, creating valued moments of shared faith within the community.

“The surrounding area includes a wide range of denominations, reflecting the religious diversity of the local community.”

These experiences also reflect a strong tradition of cooperation and provide an encouraging foundation for future opportunities to gather again.

Relationships with other denominations vary, with closer connections maintained with some groups more than others, though no formal local ecumenical partnerships exist. Additionally, there is currently no local grouping of churches working together, and neither New Wellwynd nor St. Columba's is part of any formal ecumenical body.

While current ecumenical activity is limited, both congregations have a legacy of cooperation and remain open to building stronger ties with other faith communities should the opportunity arise.

“Both congregations maintain a strong link with Christian Aid, with New Wellwynd having a designated Christian Aid Representative.”

World Church Involvement of New Wellwynd and St. Columba's

Both New Wellwynd and St. Columba's congregations actively support the wider global Church through partnerships, charitable giving, and ethical practices.

A key connection for both churches is through Mission Partners supported via Presbytery and the Church of Scotland's mission programme.

Both congregations maintain a strong link with Christian Aid, with New Wellwynd having a designated Christian Aid Representative. In addition, New Wellwynd has previously supported Tearfund through its Harvest Thank Offering Project, reflecting a commitment to tackling global poverty and injustice.

Fairtrade has long been a shared value. St. Columba's is a registered Fairtrade Congregation, and while New Wellwynd's Fairtrade stall is no longer active due to the closure of its supplier,

both churches continue to make every effort to use Fairtrade products where possible, reflecting ethical stewardship in their practices.

Engagement with global mission extends to regular support for international causes. New Wellwynd has directed Harvest offerings toward global-focused charities like Christian Aid, Tearfund, International Justice Mission UK, and Nkomo Church in Ghana. Similarly, St. Columba's has supported numerous Third World charities, including Lendwithcare, Send a Cow, Toilet Twinning, Bin Twinning and Landmine clearance projects.

Together, both congregations express a strong and practical commitment to the World Church through partnership, education, fundraising, and advocacy, living out their faith by supporting justice, development, and dignity beyond local borders.

7. Finance & Stewardship

Finance

Both New Wellwynd and St. Columba's wholly depend on offerings and donations to support our mission of sharing the Good News. This regular income is mainly from members and / or visitors giving either through Freewill Offering Envelopes, regular Standing orders or the open plates. Those members who pay income tax, sign Gift Aid Declarations which allow us to claim Gift Aid back from HMRC. The Tax recovered gives additional income at no cost to the donor.

Additionally, both congregations receive rental income from various Hall Lets to external organisations as well as the occasional donation from organisation under the supervision of the Kirk Session.

The latest Accounts for both New Wellwynd and St. Columba's¹ are available to you on request.

Stewardship

New Wellwynd has in the past organised two stewardship programmes – Count on Me (2007) and Alive & Giving (2017) where we engaged the services of a Stewardship Consultant to give guidance and direction. These programmes resulted in some members returning to the fellowship and also an increase in the level of members donations.

St. Columba's although not actively engaging in a Stewardship Programme, regularly remind the congregation of the need for stewardship within the context of membership.

“Both New Wellwynd and St. Columba's wholly depend on offerings and donations to support our mission of sharing the Good News.”

¹ NOTE – Within the St. Columba's Accounts, there is reported a shortfall of Mission & Ministries payments from earlier years. This will be mitigated with the sale of property in due course.

8. Our Challenges & Opportunities

Looking Ahead with Faith – A Time of Reflection and Renewal

As we continue on our journey as a newly formed congregation within a Parish Grouping, it's important to take stock of where we are and where God may be calling us to go. As part of our ongoing planning and reflection, we've considered our Strengths, Weaknesses, Opportunities, and Threats (SWOT). Here is an honest, hope-filled look at who we are—and who we can become together.

Our Strengths – The Heartbeat of Our Church

We are blessed with a loyal and supportive congregation, where participation is strong—many members offer readings, prayers, and practical help in worship and church life. Our people bring a variety of skills and display generosity that is spiritual, practical, and financial. These gifts reflect a deep-rooted faith and a desire to serve.

Our office bearers work tirelessly, providing leadership and wise stewardship of our resources.

We benefit from sound financial governance and well-maintained church fabric, ensuring our facilities remain welcoming and functional. Our church halls are a hive of activity, used by our own organisations and numerous external groups, making our central location a real asset to the wider community.

Areas for Growth – A Time for Openness

While we have much to celebrate, we also recognise opportunities for growth. Our congregation is blessed with many faithful and experienced members whose commitment has shaped the life of the church. At the same time, we are aware of the opportunity to welcome and engage more children, teenagers, young adults, and younger families in the life of our community. Our traditions continue to offer comfort and stability, and they also invite us to explore new ways of reaching out. Developing a stronger online presence and engaging with modern forms of communication may help us connect with a wider range of people. We also recognise that participation looks different for everyone, and we hope to encourage and support one another as we find meaningful ways to share in the life and work of the church. These areas invite us to move forward with patience, creativity, open hearts, and a spirit of encouragement as we grow together.

Our Opportunities – Stepping Out in Faith

There is a sense of excitement as we look to the future. We are called to mission—not only within our own congregation but across our wider Parish Grouping and community. There is huge potential to work collaboratively with other congregations to share resources, ideas, and ministries.

We are exploring ways to become a community hub—a place of belonging, care, and support.

There is a sense of excitement as we look to the future. We are called to mission—not only within our own congregation but across our wider Parish Grouping and community. There is huge potential to work collaboratively with other congregations to share resources, ideas, and ministries.

We see great value in intergenerational worship, bringing together all ages to learn, serve, and grow together. By “thinking outside the box,” we hope to encourage and retain young families, offering practical and spiritual support to parents juggling busy lives.

And importantly, we aim to be a church that supports all age groups, honouring the wisdom of older members while embracing the energy and insight of younger generations.

Our Threats – Challenges We Must Face

Some of our challenges reflect opportunities for growth. Our congregation, rich in experience, creates exciting opportunities to welcome and engage more children, youth, and young families, ensuring a vibrant and sustainable future. We do not face these challenges alone. We face them in faith, trusting that God, who has guided us thus far, continues to work among us.

These challenges remind us of the urgency and importance of our mission—to reach out, adapt, and embrace the new things God is doing in our midst.

Together in Hope

This SWOT analysis is not just a strategic exercise; it's a spiritual invitation. It calls us to celebrate what is good, acknowledge what needs healing, and step boldly into the opportunities God places before us.

We will keep praying, dreaming, and working together—as one people, one congregation, and one community of faith—committed to the Gospel and to one another.

9. Environmental

The New Wellwynd and St. Columba's in Airdrie show differing levels of environmental engagement. The New Wellwynd currently has no active involvement in the Eco-Congregation Programme and has not undertaken a recent environmental audit. As a result, there are no formal environmental initiatives in place at this time.

St. Columba's demonstrates a strong commitment to environmental stewardship. The congregation actively participates in the Eco-Congregation Programme and has been awarded a Silver Award, recognising significant efforts to integrate sustainable practices into church life. While a recent environmental audit has not been recorded, the award reflects ongoing dedication to environmental responsibility.

Moving forward and learning from St. Columba's experience we can encourage everyone to become more involved in this type of stewardship.

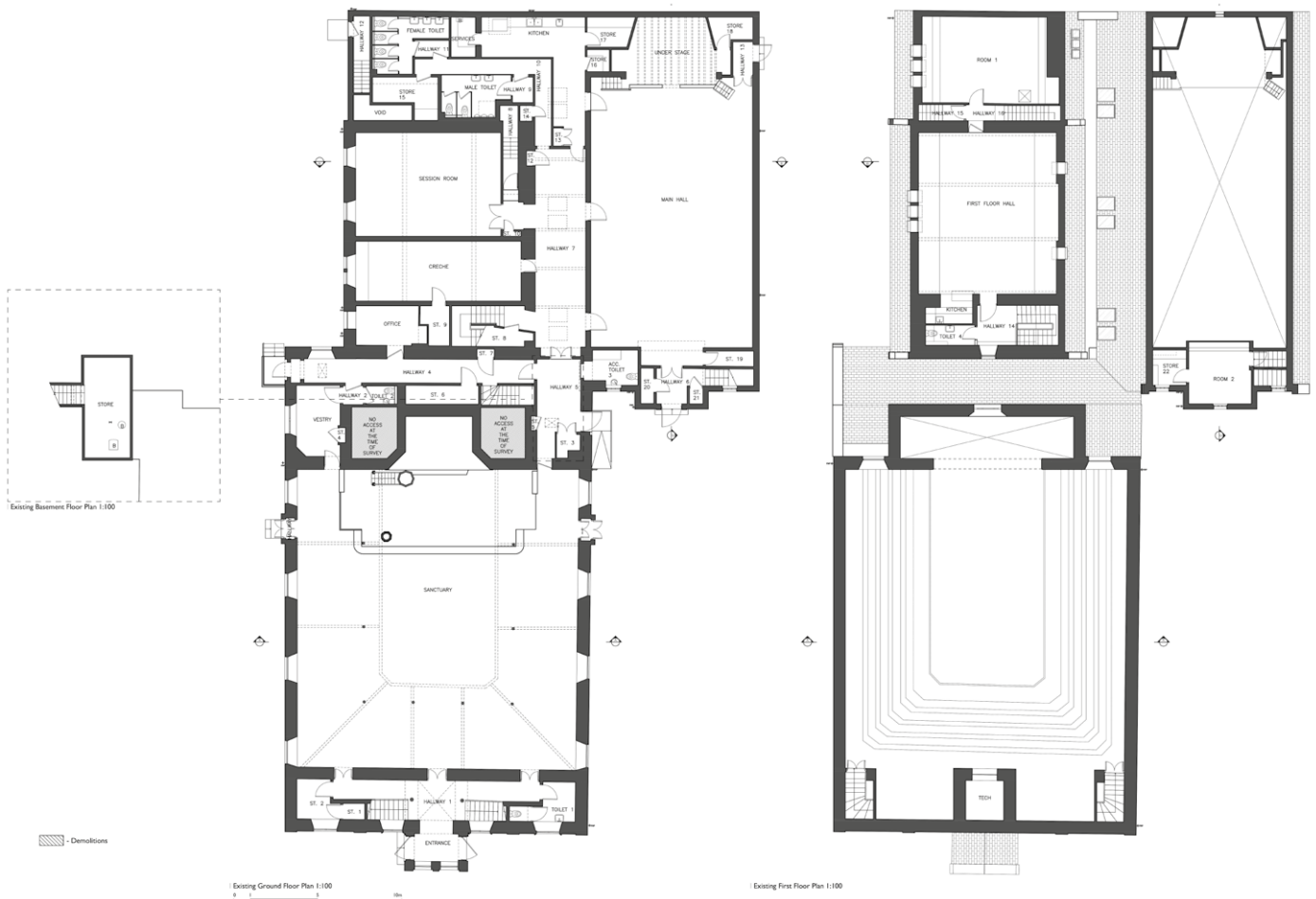
“St. Columba's demonstrates a strong commitment to environmental stewardship.”

10. Buildings Place of Worship



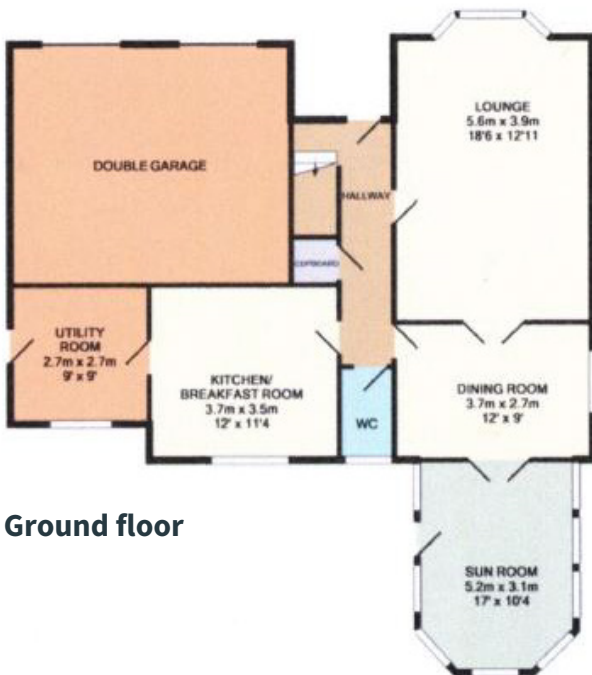
The Church at present used and occupied by the congregation of The New Wellwynd Parish Church of Scotland, Airdrie shall be the place of worship of the united charge.

A Halls refurbishment project which had been put on hold due to the pandemic is currently being revisited and a feasibility study is currently in progress.

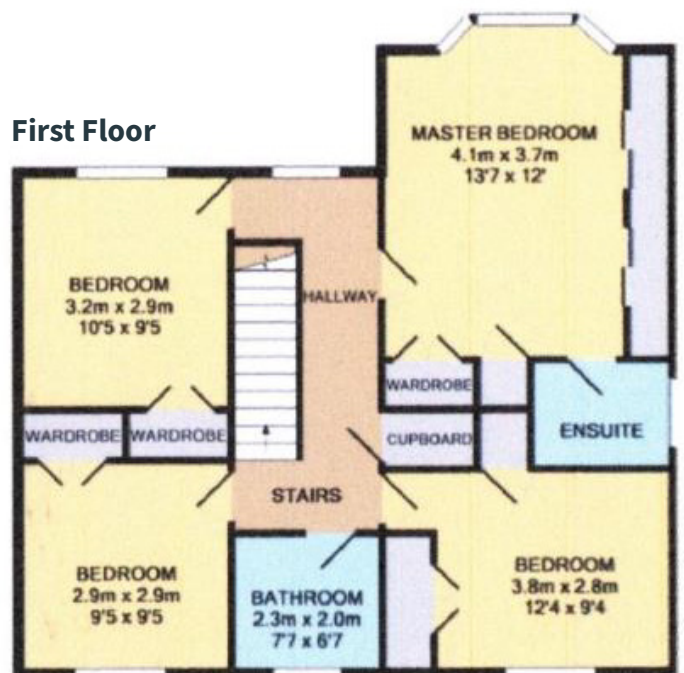


Manse

The manse of the congregation of The New Wellwynd Parish Church of Scotland, Airdrie shall be the manse of the united charge.



Ground floor

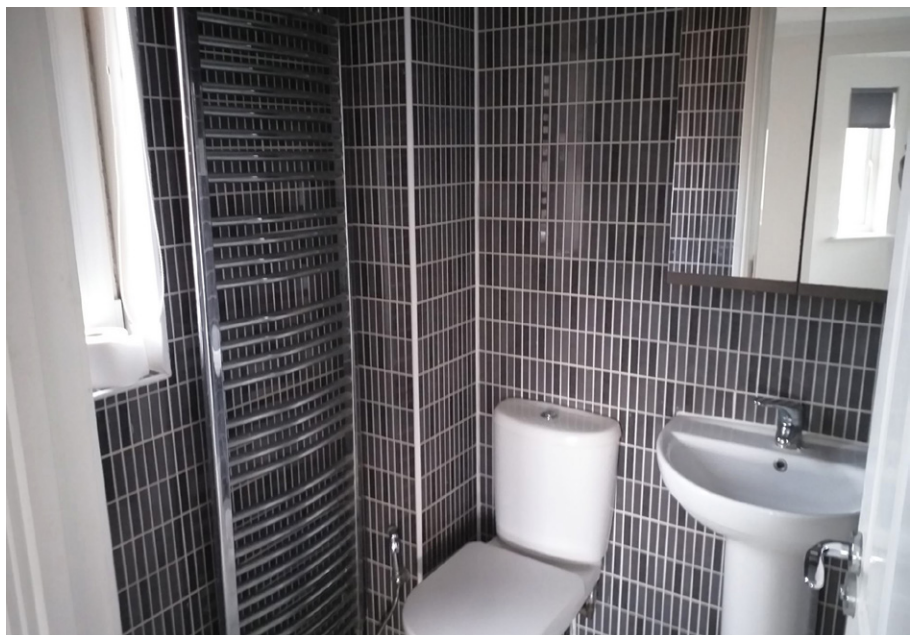


Floorplan Description:

Ground floor – 2 Reception Rooms, Hallway leading to Upper floor, Sunroom, Kitchen/Breakfast Room, Utility room, Study and Garage.

First Floor – Master Bedroom with En-suite facilities, 3 Bedrooms and Family Bathroom and upper landing.

Grounds – easily maintained garden to front and rear. Monoblock paved driveway.



Together, both churches reflect a model of shared responsibility and engagement”

11. Staffing

The staffing profiles of New Wellwynd and St. Columba's in Airdrie reflect two congregations operating with limited paid personnel and a strong reliance on volunteer support.

At New Wellwynd, there is no Ministry Development Staff (MDS) member or designated church secretary. However, administrative support is available when required. A Church Officer is employed and plays a key role in supporting the church's day-to-day operations. In addition, New Wellwynd employs a paid organist and a paid cleaner, ensuring high standards in worship and building maintenance. Overall, the church balances paid support with active member participation to deliver its mission effectively.

St. Columba's also has no MDS staff or permanent staff, highlighting a strong community spirit and commitment among members to carry out these tasks. Paid staffing is minimal, with only the organist employed to support worship. No cleaner or additional staff are in place.

Together, both churches reflect a model of shared responsibility and engagement. While New Wellwynd benefits from more structured paid support, St. Columba's depends almost entirely on volunteer contributions. Despite differences in staffing, both congregations remain committed to sustaining their worship, ministry, and outreach, grounded in a sense of community involvement and faithful service.

12. Web Links

NOTE - Each heading has an embedded link – please hover over the link / click the link to view the appropriate file for further information.

Airdrie

[The Wandering Kilt >](#)

The New Wellwynd

[Website >](#)

[Facebook >](#)

[Instagram >](#)

Church of Scotland: Church finder:

[Parish Statistics \(from Census 2011\) >](#)

[SIMD \(Deprivation Statistics 2020\) >](#)

[OSCR >](#)

St. Columba's

[Website >](#)

[Facebook >](#)

Church of Scotland: Church finder:

[Parish Statistics \(from Census 2011\) >](#)

[SIMD \(Deprivation Statistics 2020\) >](#)

[OSCR >](#)